

OCL

OCL

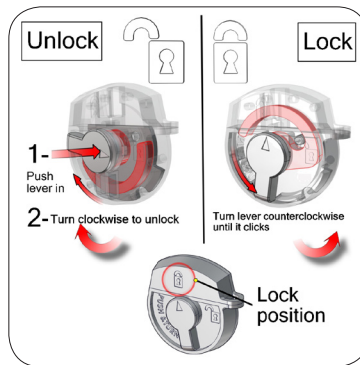
This blow-molded display case is the perfect protective shipping and storage case for a variety of display products. Built-in wheels and easy-to-grip molded handles make the case portable and easy to transport. New premium latches keep the lid secure.



Push & turn locking mechanism



Recessed wheels and handle



Lock instructions

features and benefits:

- Push & turn locking mechanism
- Premium latches for maximum strength
- Blow-molded case
- Reliable built-in wheels with enclosed axel
- One year limited hardware warranty against manufacturer defects

dimensions:

Hardware

Interior:
14" w x 51.5" h x 13.25" d
356mm(w) x 1308mm(h) x 337mm(d)

Exterior:
18" w x 55.125" h x 16.5" d
457mm(w) x 1400mm(h) x 419mm(d)

Weight:
20 lbs / 9 kgs

Shipping

Shipping dimensions - ships in a box:
57" l x 19" h x 19" d
1448mm(l) x 483mm(h) x 483mm(d)

Approximate shipping weight:
22 lb / 10 kgs

We are continually improving and modifying our product range and reserve the right to vary the specifications without prior notice. All dimensions and weights quoted are approximate and we accept no responsibility for variance. E&OE. See Graphic Templates for graphic bleed specifications.